

APARTMENT for sale in Grottammare RESIDENZIALE (sopra la Statale 16) € 270.000 Ref. 9539



81 sq.m. | Bathrooms:: 2 | Bedrooms:: 2 | Rooms:: 4

Certification

Energy classification:: A4

EPgInr: 45.00 kwh/□

Features

Floor:: Maisonette

Total floors:: 3

Independent heating:: Independent

Car parking space:: Uncovered

Year of construction:: 2025

Balconies:: Present, 17 sq.m.

Terrace:: Present, 46 sq.m.

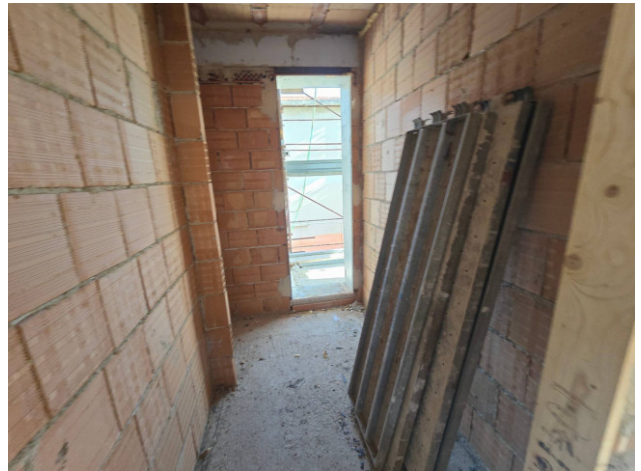
Garden:: Private, 40 sq.m.

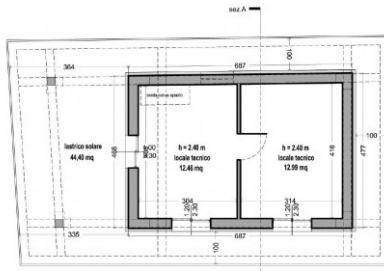
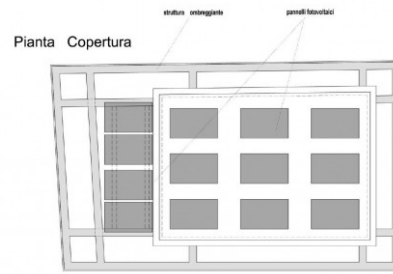


Distance from seafront:: 700 meter	Kitchen:: Open-plan kitchen
Antenna switch	Internet high speed coverage (ADSL)
Air Conditioning	Telephone system
Uncovered car parking space	Sea view
Panoramic view	Armoured entrance door
Availability (multiple selection) : 3 months	More properties are available in this same building
New development	

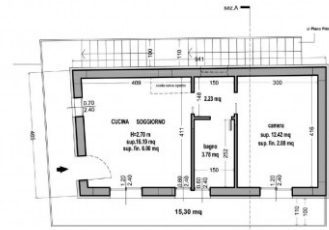
Nearby

Gymnasiums:	Wellness centre (spa):
Football field:	Sport complex:
Tennis court:	Cycling lanes:
Recreation grounds:	Train station:
Public means of transport:	Kindergarten:
Elementary schools:	Junior high school:
Senior high school:	Shopping centre:
Pizzerias:	Restaurants:
University:	





Pianta Piano Secondo



Pianta Piano Primo